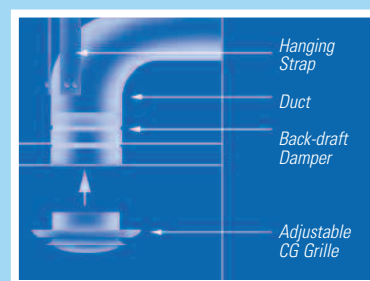
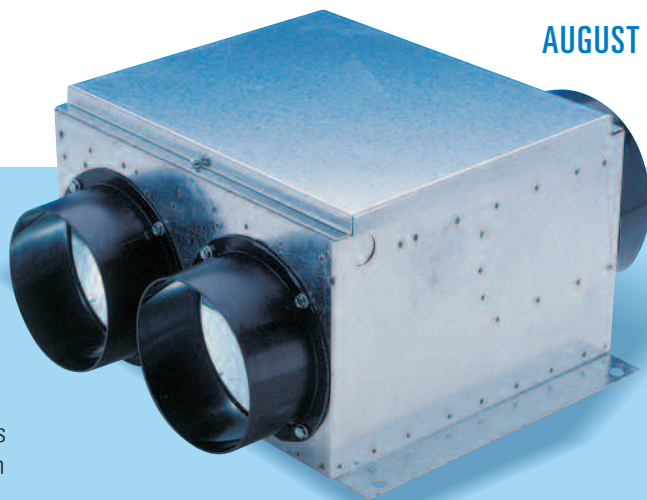


CVS SERIES MULTI-PORT CENTRIFUGAL FANS

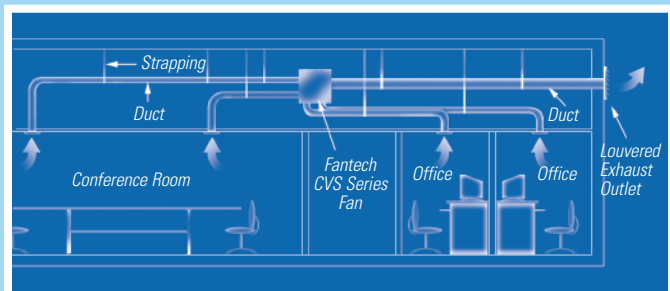
Fantech's CVS fans have been engineered for installation in areas where space is limited. They are a popular choice for use in areas between floors in apartment buildings or high rise office complexes. With Fantech's CVS models, several exhaust points connect into one centrally located fan without the use of adapters or transitions. The motorized impeller is both statically and dynamically balanced as one integral unit, for vibration free, quiet performance. With multiple exhaust points going into one fan, wall or roof penetrations are kept to a minimum. Choose from models with two or four ventilation points providing 245 CFM to 404 CFM of air movement.

Easy Installation

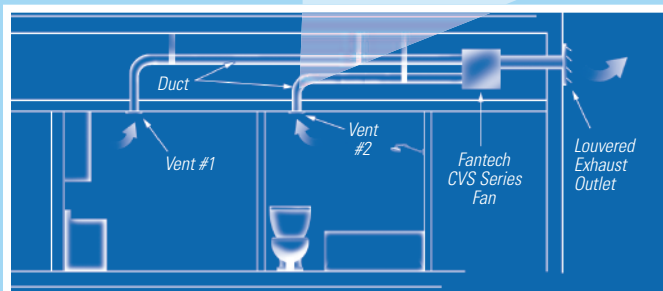
Fantech CVS fans are simple to install. Simply select the fan mounting location, taking into account the type of application, service accessibility, and distance from exhaust point (to minimize fan operating noise). Secure the unit using either threaded rod or wires to suspend the unit. Finally, connect the ductwork to inlet and outlet of the fan using CB or FC clamps or duct tape.



COMMERCIAL APPLICATION

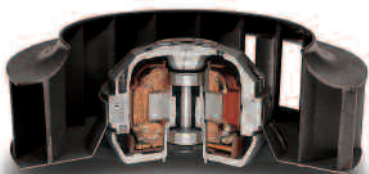


RESIDENTIAL APPLICATION



FOR ALL THESE REASONS ... AND MORE:

- Galvanized steel housing
- External rotor motor with backward-curved centrifugal fan wheel constructed of high-density polyamide, easily removable from housing for service without disturbing the installation
- Internal scroll for maximum air performance

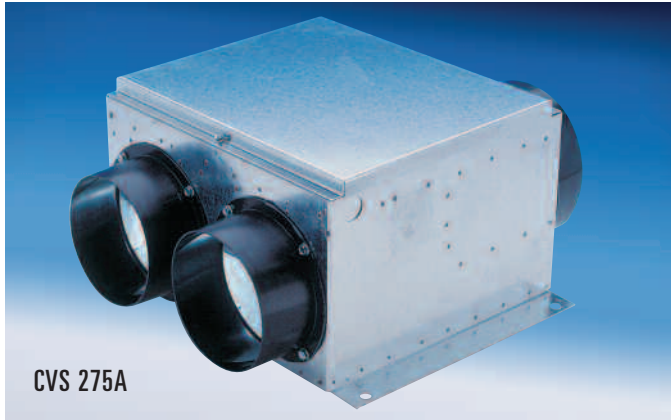


Fantech external rotor motor

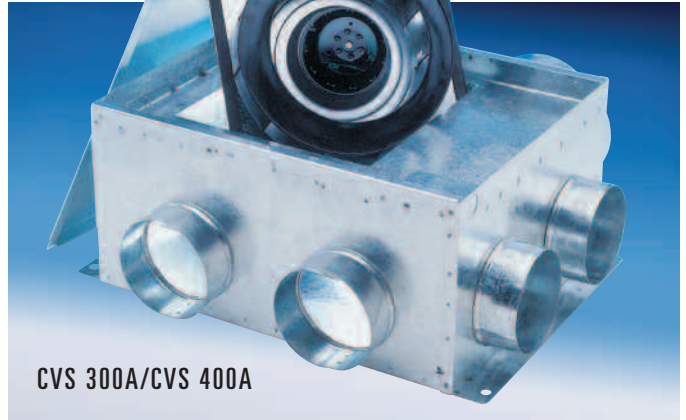
- Well-designed inlet venturi for optimum efficiency
- Permanently lubricated sealed ball bearings
- 100% speed controllable for highly efficient and economical airflow
- Suitable for airstream temperatures up to 140° F
- CSA Certified
- Five-year warranty

CVS SERIES

MULTI-PORT VENTILATION FANS

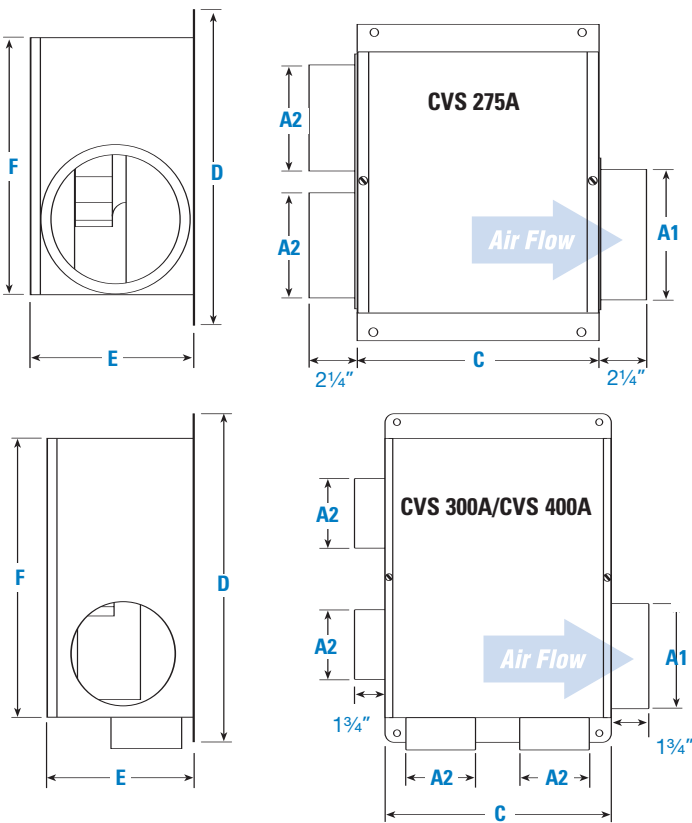


CVS 275A



CVS 300A/400A

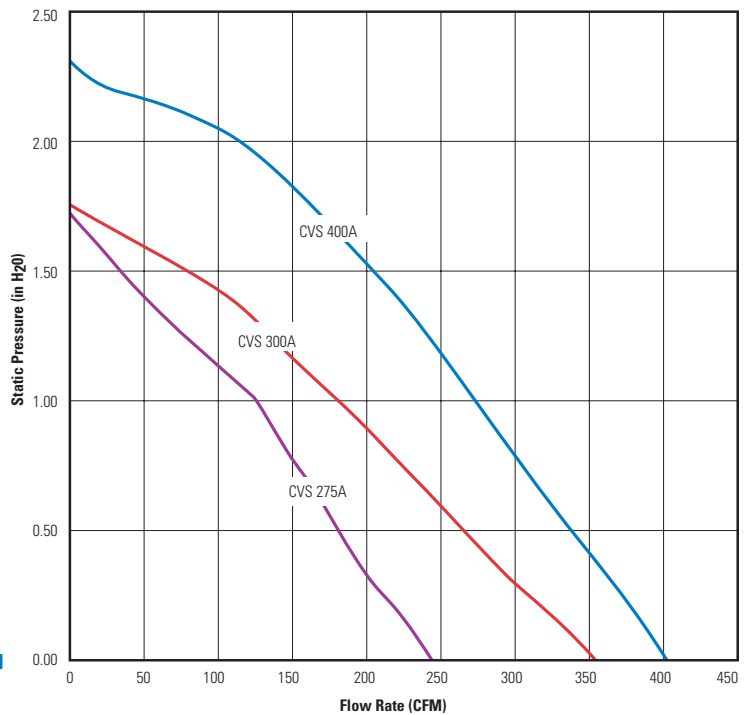
DIMENSIONAL DATA



Model	A1	A2	C	D	E	F
CVS 275A	6	5	11	15	7 ⁹ / ₈	12
CVS 300A	6	4	13	18 ³ / ₄	8 ¹ / ₄	16
CVS 400A	6	4	13	18 ³ / ₄	8 ¹ / ₄	16

All dimensions in inches. * Duct connections are 1/8" smaller than duct size.

AIR PERFORMANCE GRAPH



PERFORMANCE DATA

Fan Model	RPM	Voltage	Rated Watts	Wattage Range	Max. Amps	Static Pressure in Inches W.G.						Max. Ps	Duct Dia.	
						0"	0.2"	0.4"	0.6"	0.8"	1.0"			1.5"
CVS 275A	2550	115	92	78 - 93	0.79	245	220	192	171	147	126	34	1.72"	5"
CVS 300A	2500	115	123	110 - 123	1.07	355	320	283	249	215	180	79	1.76"	4"
CVS 400A	2950	115	156	130 - 158	1.41	404	380	352	324	299	274	204	2.30"	4"

CVS Series performance is shown with ducted outlet. Per HVI's Certified Ratings Program, charted air flow performance has been derated by a factor based on actual test results and the certified rate at .2 inches WG.



United States 1712 Northgate Blvd. • Sarasota, FL. 34234 • 1.800.747.1762 • www.fantech.net
Canada 50 Kanalfakt Way • Bouctouche, NB E4S 3M5 • 1.800.565.3548 • www.fantech.ca

Item #: 450482
 Rev Date: 082707

Fantech, reserves the right to modify, at any time and without notice, any or all of its products' features, designs, components and specifications to maintain their technological leadership position.